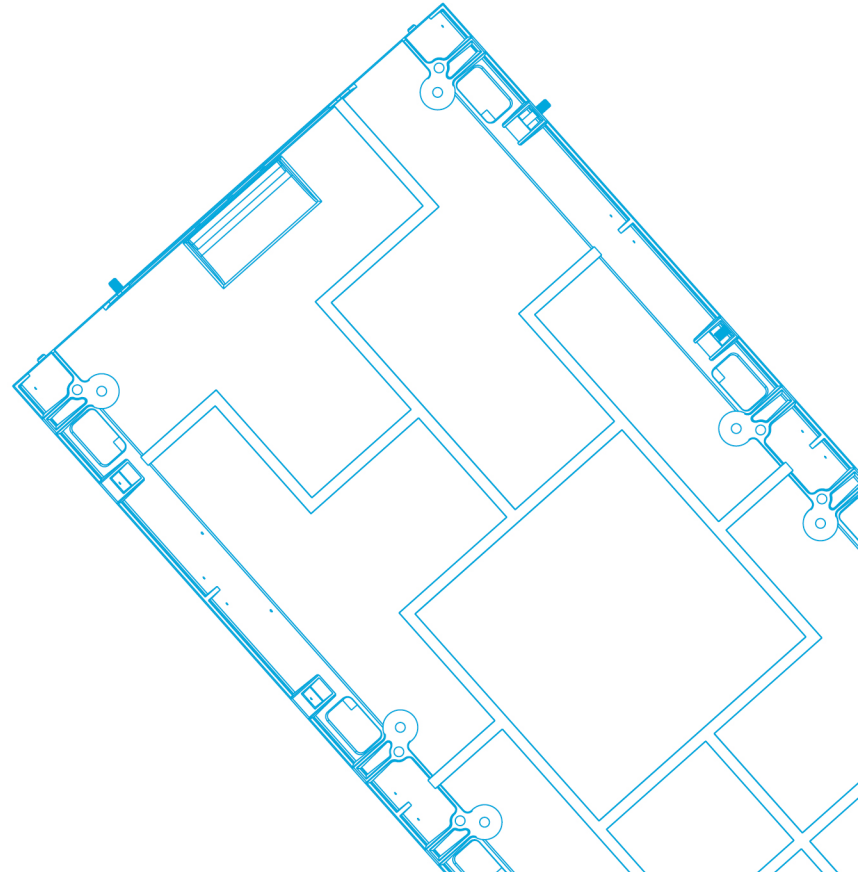


GX

Series



The Most Cost-Effective
Indoor Fixed Display



The Most Cost-Effective Indoor Fixed Display

GX Series optimizes the balance between minimize budget and satisfied quality standard. GX Series will create the greatest value for you by freely combining cabinets of different sizes and standardized universal modules. Figure on size of cabinets help to reduce processing and hardware in each cabinet, ultimately keeping manufacturing costs down. Except for the tiles simplistic design, it is fully front serviceable making it ideal for indoor advertising solutions in high-end retail stores and other places.

- Any Size You Want
- Ultra-light & Ultra-thin Design
- Perfect Flatness
- Interactive Touch Display
- Multiple Installation Methods
- Easy Service and Maintenance
- More Reliable



01

Any Size You Want

· Variable installation would be available by combination of cabinets in below 9 sizes:

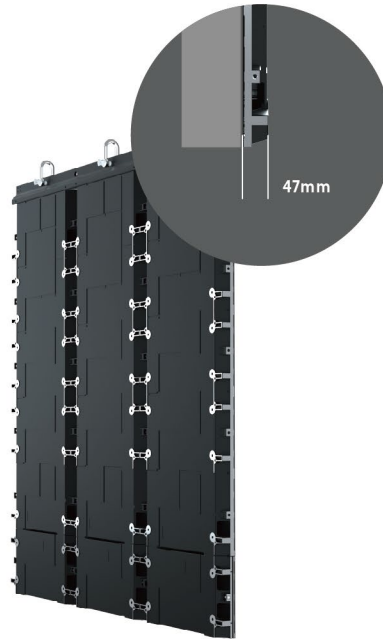
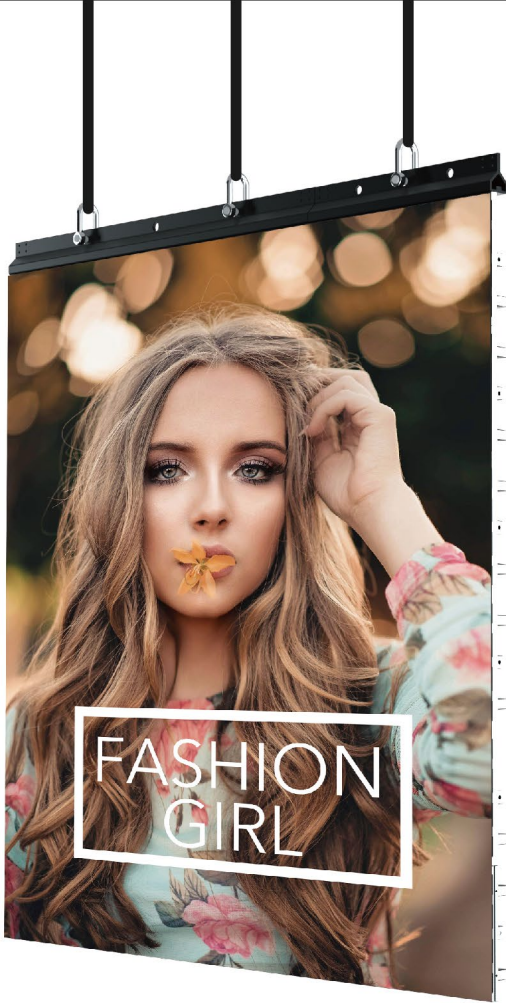
500x1,000x47mm, 500x750x47mm, 500x500x47mm,

500x250x47mm, 250x500x47mm, 250x1,000x47mm,

250x750x47mm, 1,000x250x47mm, 750x250x47mm,

which can perfectly meet the demand of installation diversity.





02 / Ultra-light & Ultra-thin Design

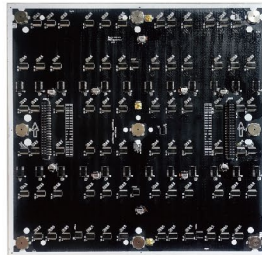
· The Ultra-light and Ultra-thin design (thinnest 47mm) help to save greatly the space for wall mounting. In addition, Atrium and other lifting solutions would be available with Uniview's unique hanging beam. The whole screen would be one beautiful pattern by viewing from the back.



Die-cast Aluminum

03 / Perfect Flatness

· GX cabinets are made of die-cast aluminum ensuring high strength and high flatness.



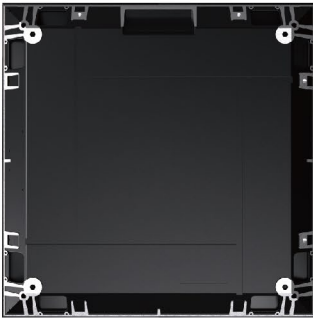
Direct Connection

· Modules adopts housing-free design to effectively avoid secondary error. Additionally, direct connection, meaning free of flat ribbon cables, guarantees a fast service in seconds.

04

Interactive Touch Display

· GX TOUCH 500*500 cabinets can form a cube shape, allowing you to capture audience's attention immediately and provide a stunning visual experience for them.



INTERACTIVE TOUCH CUBE



1.9/2.6



800nits



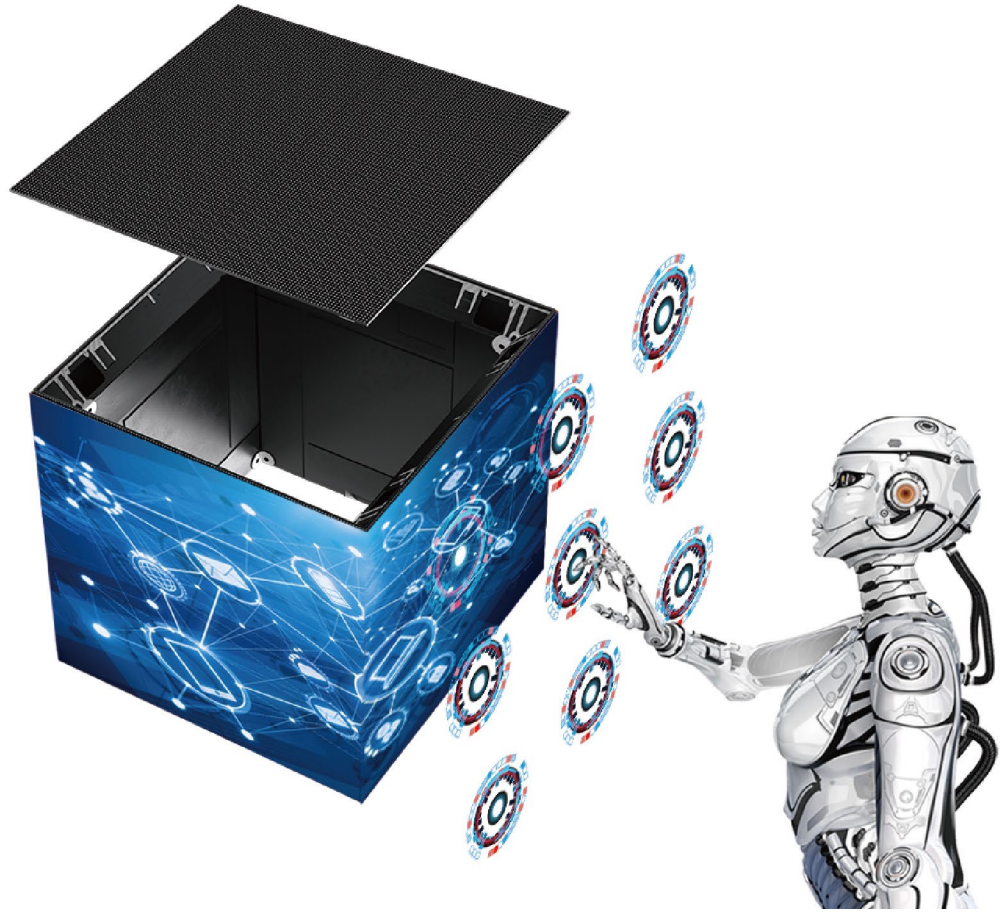
0.01s



256/m²



Pixel Pitch(mm):1.8/ 1.9/ 2.6

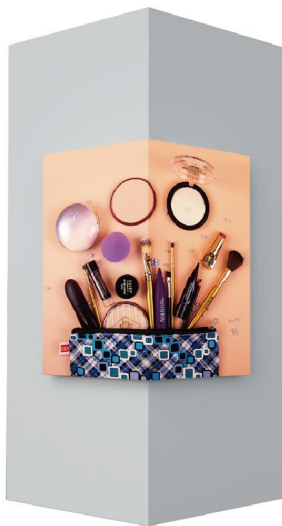


05 / Multiple Installation Methods

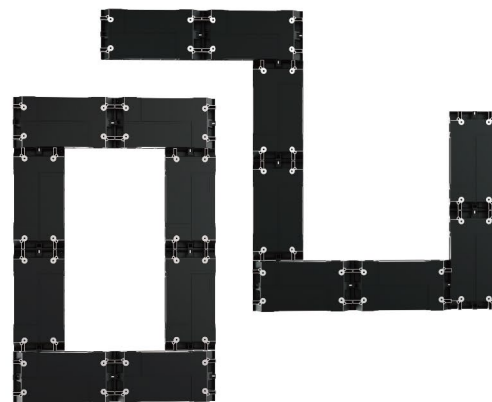
1. GX series supports both wall mounting and hanging installations.



2. Supports seamless right-angle installation.



3. Supports flexible splicing of 250x500mm cabinets.



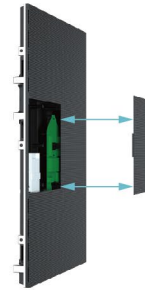
06

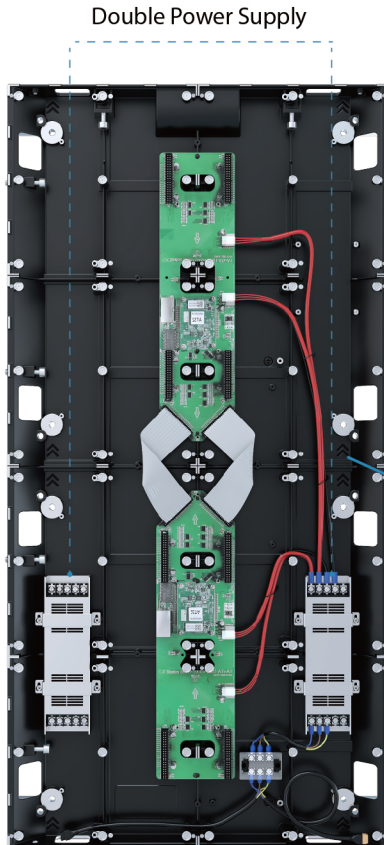
Easy Service and Maintenance

· Hidden internal cable routing make it easy to maintain and keep neat at the same time.



Easy and fully front serviceability





07/

More Reliable

· Redundancy on Power & Signal, safe and reliable.

Intelligent Module

The module has its own calibration data storage, which can automatically import the calibration data when replacing the module.

Parameters

Model	GX1.5	GX1.9	GX2.5	GX2.6	GX2.9	GX3.1	GX3.9	GX4.8	GX5.9	GX HB2.9	GX HB3.9
Pixel Pitch (mm)	1.562	1.953	2.500	2.604	2.976	3.125	3.906	4.807	5.952	2.976	3.906
LED Configuration	SMD1212 (Black)	SMD1515	SMD1515/ SMD2020 (Black)		SMD2020 (Black)					SMD1921	
Adjustable Brightness (cd/m²)	600	≥ 800							600-800	≥3000	
Module Size (WxH mm)	250x250										
Module Resolution	160x160	128x128	100x100	96x96	84x84	80x80	64x64	52x52	42x42	84x84	64x64
Refresh Rate (Hz)	≥2880		≥3840								
Viewing Angle (H/V)	160°/140°									140°/140°	
Grayscale (Bit)	14 bit										
Cabinet Size (WxHxD mm)	500x1,000x47, 500x750x47, 500x500x47, 500x250x47, 250x500x47, 1,000x250x47, 250x750x47, 250x1000x47, 750x250x47										
Cabinet Weight (kg/panel)	11.2/8.5/6.5/3.5/3.5/6.4/5/6.4/5										
Power Consumption (Max/Avg W/m²)	450/150									600/200	

* Technical specifications are subject to change without prior notice. Please contact our sales representative for the latest information.

Taking Notes:

SHENZHEN UNIVIEW LED CO., LTD

E-mail: sales@univiewled.com

Website: www.univiewled.com

Add: Bldg.A, Meicheng Industrial Park, Langjiing Road,
Dalang St., Longhua District, Shenzhen, China.

UNIVIEW EUROPE B.V.

Phone: +31 402026113

Add: Verdunplein 9, 5627 SZ Eindhoven, the Netherlands.

