

YZERI



Machine Room Less Elevators

YZERI

Hyundai Elevator sets a new benchmark, moving beyond yesterday’s concept of value. Yesterday’s value which defined an elevator as a machine connecting vertical space, is fading. Hyundai Elevator presents a new standard that makes people feel safe, comfortable, and happy in elevators.

An elevator for the people:
The mission of YZER I



CONTENTS

03	Philosophy + New Technology
05	Philosophy + New Space
Key Features of YZER I	
07	Ultra Slim LED Ceiling / Anti-Virus Handrail
08	Car Operating Panel / Indicator / Hall Button
Options of YZER I	
09	Smart Indicator
10	IBS System (Card key) and Other Options
Cage Design of YZER I	
11	Philosophy + New Design
13	YZER I - A
15	YZER I - B
17	YZER I - C
19	YZER I - D
Specifications of YZER I	
21	Characteristics of a Machine Room Less System
22	Hoistway Plan and Section
23	Technical Data
24	Works to Be Done by Other Contractors
25	Network



A new standard of living and true concern for people **Bringing people and elevators closer**

Elevators that make people happy

Hyundai Elevator has raised these questions continuously
should an elevator be perceived only as a means of transport?
Are those convenience and attractive design should be
prioritized?

An elevator that serves as a companion to people and reflects
their needs: this is the new philosophy and technology
embraced by Hyundai Elevator's YZER I.

Ultra Slim LED Ceiling Applied to All Products

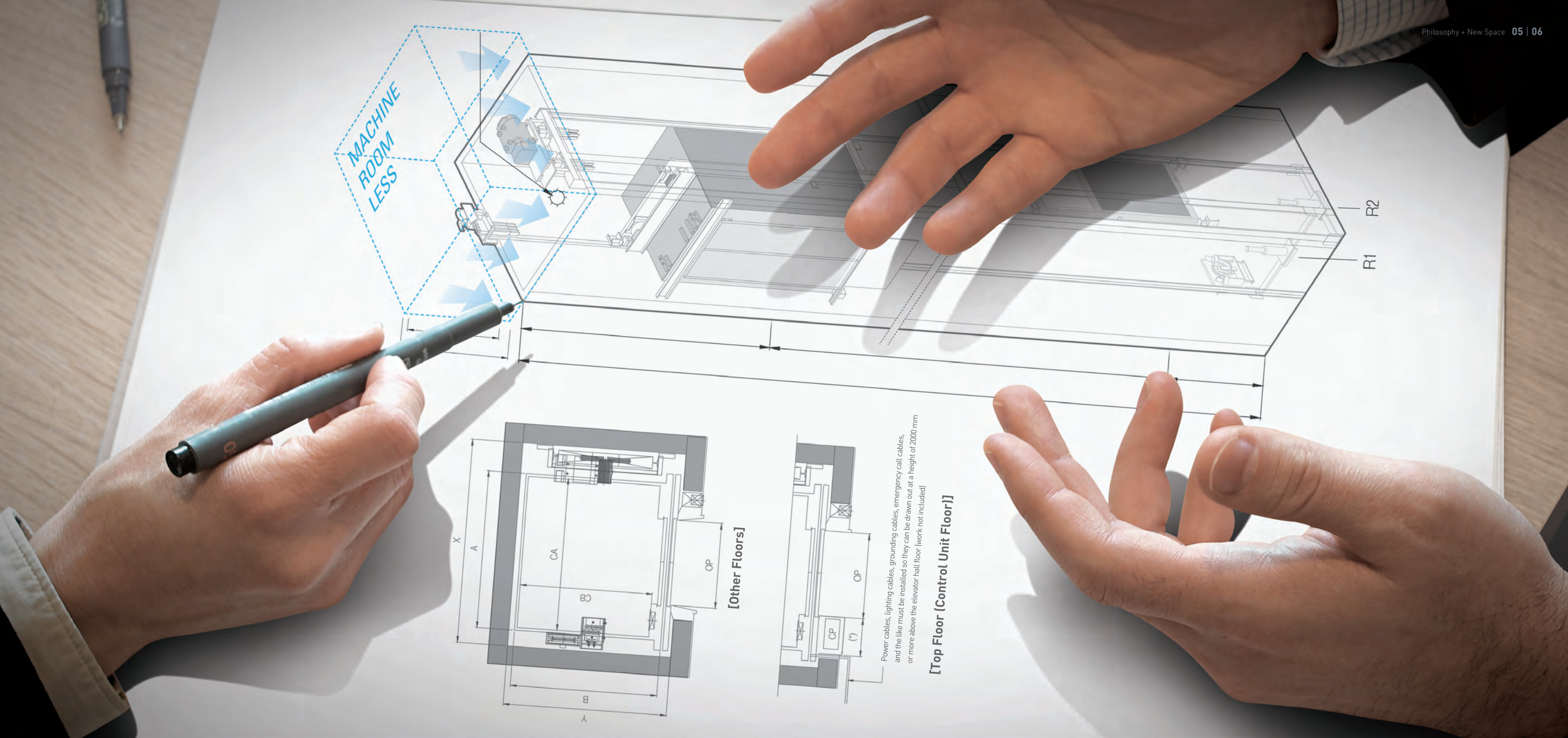
All products are outfitted with an ultra slim LED ceiling (<50 mm), which
provides roominess in both height and width inside the elevator.



Smart Indicator (Option)

An industry first, the Smart Indicator delivers a pleasant environment in any
conditions by means of an anion double-clean system and ultrasonic
pest-repellant function. Its LCD display with an integrated CCTV assures
safer elevator operation.





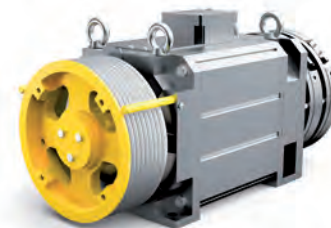
More convenient, more comfortable Elevator that understands people

An elevator that values people and space

Efficient horizontal space that allows people to get on and off an elevator with ease, as well as a ceiling height that achieves a pleasing, soothing space: this is the philosophy of space embodied by Hyundai Elevator's YZER I.

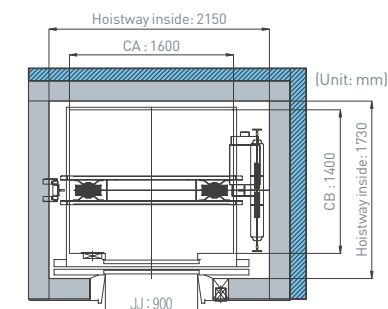
High-performance, eco-friendly traction machine

Built with technology developed at the company's R&D center in the Korean headquarters, the ultra-small YZER I traction machine delivers the world's highest standard of quality. As the essence of modern technology, it promises convenient maintenance by operating on an oil-free traction system that does not need regular oiling of its bearing unit.



Minimized hoistway size

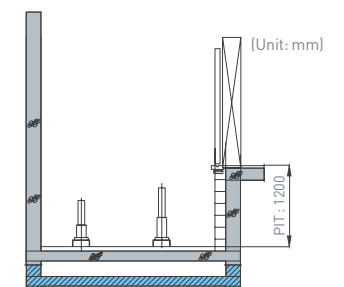
Minimized hoistway size and elimination of a machine room reduce construction costs and incidental expenses to the greatest extent thanks to a shortened construction schedule.



21% reduction in hoistway (1000kg capacity)
Compared with the Company's existing products

Minimized pit length (1200 mm)

Efficient pit space with a minimized length of 1200 mm has become possible through topside arrangement of the suspension structure.



300 mm reduction in length

YZER I

KEY FEATURES

LED CEILING



Ultra Slim LED Ceiling

Eco-friendly LED ceiling provides higher, roomier space and reduces eye fatigue.

- Ultra Slim LED Ceiling (<50 mm) Applied to All Products**
- Higher ceiling offers a more spacious and pleasant interior space.
 - Reduced power consumption lowers maintenance costs and brighter interior space eases eye fatigue.



HANDRAIL



Anti-Virus Handrail (OPTION)

Handrails are exposed to many germs through constant touching, but the use of antimicrobial materials protects users from harmful viruses.

- Virus-Resistant Materials (OPTION)**
- The safest, most convenient handrails employ the latest ergonomic design and motion analysis as well as antimicrobial materials.



Standard Handrail

CAR OPERATING PANEL / INDICATOR / HALL BUTTON



YZER I Family Look

A two-tone, black and silver color combination completes the Hyundai Elevator family-look. The operating panel, indicator, and hall button all share an open-type design, allowing for easier maintenance.

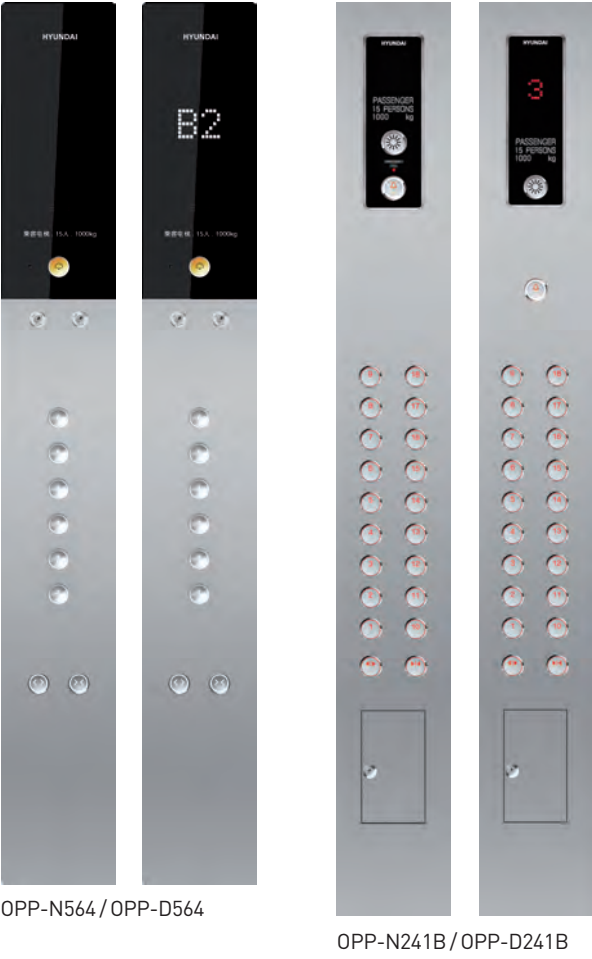
Hall Button



Indicator



Car Operating Panel



YZER I

OPTIONS

SMART INDICATOR (OPTION)



Time / Date Info Display

An LCD display improves user convenience by providing easy access to information such as date, time, and floor. It boasts a sophisticated design and dramatically enhanced readability.

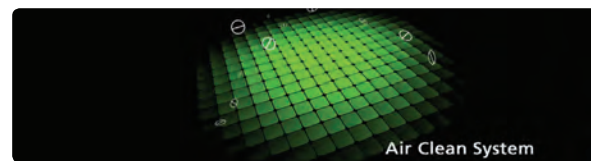
Smart care for health

Double-clean system maintains clean air in the elevator

Double-Clean System Equipped with Air-Cleaning and Antiseptic Functions

An anion-generating Air Cleaner that works year-round and an indicator combines to produce an all-in-one design. Clean interior air quality is maintained through the complete elimination of undesirable active oxygen and germs.

Visual recognition of system operation is easy since Air-Clean, Anion, and Anti-Virus are displayed in sequence.



- Over 100,000 anions are released per 1 cc of air, keeping air clean and fresh at all times.
- More than 99% of harmful substances, including viruses, are removed (after four hours' operation).
- This system achieves eliminating malodorous substances.

Smart care for safety

Smart Indicator helps passengers to see safety functions with their own eyes.



CCTV Security Info Display System

When CCTV is operated, the Smart Indicator displays a CCTV graphic. This prevents crime by alerting people for potential crimes in a closed space.

* CCTV Security Info Display System requires installation of CCTV (optional).



Ultrasonic Pest-Repellent Function

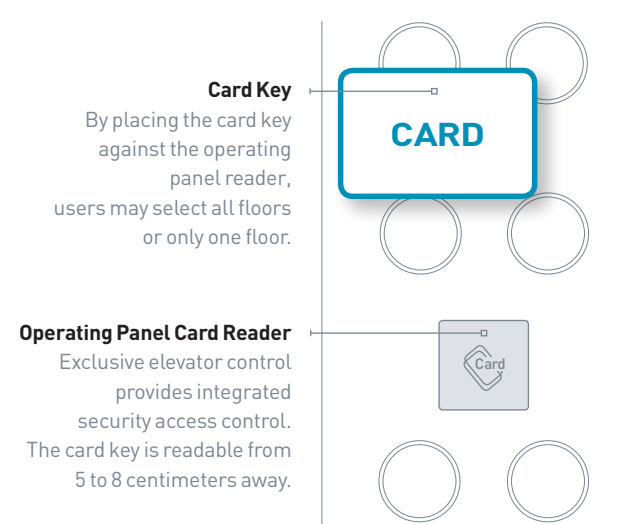
Colorless and odorless ultrasonic waves eradicates mosquitoes and other pests, to create a pleasant interior space, which up to now was hard to achieve due to frequent door-opening.

IBS SYSTEM (CARD KEY)



IBS System (Card key)

It enables effective security and crime prevention by limiting entry/exit by outsiders.



BLACK BOX-TYPE CCTV/ MULTI-BEAM DOOR SAFETY DEVICE



Black Box-Type CCTV

CCTV camera records all elevator activity including passengers, ensuring security control on a real-time basis.

Multi-Beam Door Safety Device

Multibeam sensor detects passenger movement and automatically opens the door, helping prevent accidents.

Design that blends user preferences with cutting-edge sensitivity

An elevator with a sensitive touch

Sensitive elevator that interacts with people

Hyundai Elevator places top priority on users' preferences because it considers an elevator more than a machine for moving people.

Harmonizing technology with artistry to achieve the perfect blend of beauty and comfort: this is the design philosophy behind Hyundai Elevator's YZER I.

YZER I - A



YZER I - B



YZER I - C



YZER I - D



CAR DESIGN COLLECTION

YZER I - A Type

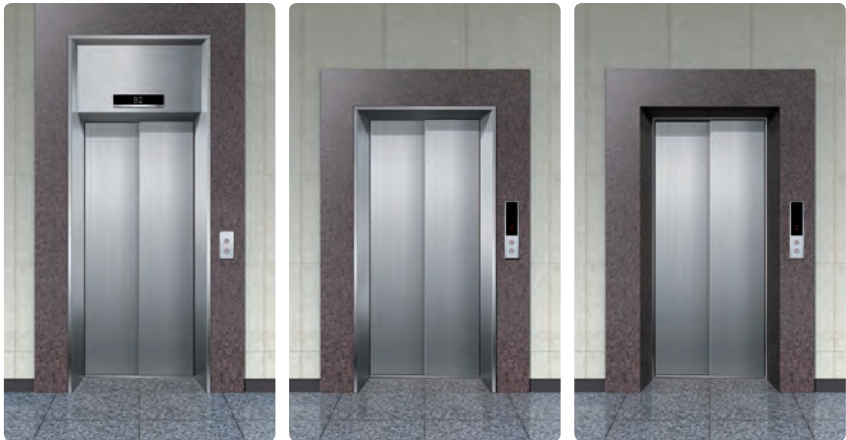


Front image

Rear image

CAR DESIGN

- Ceiling → CD198A / Aluminum (Silver), LED Lighting, LED Down Light (4EA), Ceiling Plate (Painted Steel / P021)
- Car Wall → Stainless Hairline
- Handrail → Stainless 1Pipe (1C) / Polished, Chrome Bracket
- Car Door → Stainless Hairline
- Car Operating Panel → OPP-D564 / Stainless Hairline
- Flooring → Deco Tile (FH-03, TN2233C)



201 Type

100 Type

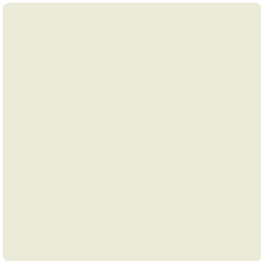
50 Type

ENTRANCE

- | | | |
|----------|-----------------------|---------------------------------|
| 201 Type | Jamb | → Stainless Hairline / 201Type |
| | Transom Panel | → Stainless Hairline |
| | Door | → Stainless Hairline |
| | Hall Button Indicator | → HPB-641
→ PI-D700 |
| 100 Type | Jamb | → Stainless Hairline / 100 Type |
| | Door | → Stainless Hairline |
| | Hall Button | → HIP-D641 |
| 50 Type | Jamb | → Stainless Hairline / 50 Type |
| | Door | → Stainless Hairline |
| | Hall Button | → HIP-D641 |

CAR DESIGN COLLECTION

YZER I - B Type



CAR DESIGN

- Ceiling → CD199B / Stainless Hairline, LED Bar Type Module (P022), Ceiling Plate (Painted Steel / P021)
- Car Wall → Stainless Hairline, Painted Steel / P017
- Handrail → Stainless 1Pipe (1C) / Polished, Chrome Bracket
- Car Door → Painted Steel / P017
- Car Operating Panel → OPP-D564 / Stainless Hairline
- Flooring → Deco Tile (TN2402C, DTE5311)



Front image



Rear image

ENTRANCE

- | | | |
|----------|-----------------------|---------------------------------|
| 201 Type | Jamb | → Stainless Hairline / 201Type |
| | Transom Panel | → Stainless Hairline |
| | Door | → Painted Steel / P017 |
| | Hall Button Indicator | → HPB-641
→ PI-D700 |
| 100 Type | Jamb | → Stainless Hairline / 100 Type |
| | Door | → Painted steel / P017 |
| | Hall Button | → HIP-D641 |
| 50 Type | Jamb | → Stainless Hairline / 50 Type |
| | Door | → Painted steel / P017 |
| | Hall Button | → HIP-D641 |



201 Type



100 Type



50 Type

CAR DESIGN COLLECTION

YZER I - C Type



CAR DESIGN

- Ceiling → CD191A / Stainless Hairline, LED BarType Lighting, Ceiling Plate (Painted Steel / P024)
- Car Wall → Stainless Hairline, Stainless Hairline Etching (SE2310)
- Handrail → Stainless 1Pipe (1C) / Polished, Chrome Bracket
- Car Door → STS Hairline Etching (SE2310)
- Car Operating Panel → OPP-D564 / STS Hairline
- Flooring → Deco Tile (DTE2109, DTE2126)



Front image



Rear image

ENTRANCE

- | | | |
|----------|---------------|---------------------------------------|
| 201 Type | Jamb | → STS Hairline / 201Type |
| | Transom Panel | → STS Hairline |
| | Door | → STS Hairline Etching (SE2310) |
| | Hall Button | → HPB-641 |
| | Indicator | → PI-D700 |
| 100 Type | Jamb | → Stainless Hairline / 100 Type |
| | Door | → Stainless Hairline Etching (SE2310) |
| | Hall Button | → HIP-D641 |
| 50 Type | Jamb | → Stainless Hairline / 50 Type |
| | Door | → Stainless Hairline Etching (SE2310) |
| | Hall Button | → HIP-D641 |



201 Type



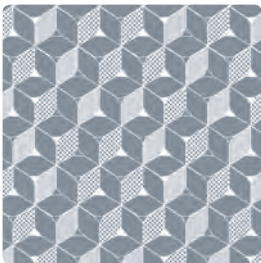
100 Type



50 Type

CAR DESIGN COLLECTION

YZER I - D Type



Front image



Rear image

CAR DESIGN

- Ceiling → CD199B / Stainless Hairline, LED Bar Type Module (P022), Ceiling Plate (Painted Steel / P025)
- Car Wall → Stainless Hairline, Stainless Hairline Etching (SE2312)
- Handrail → 1FW (Option) / Virus-Resistant Single Bar (Wood Pattern), Aluminum Bracket
- Car Door → Stainless Hairline Etching (SE2312)
- Car Operating Panel → OPP-N364 (Option)
- Flooring → Deco Tile (DTS5160, DTE2245(Option))
- Indicator → PI-L210 (Option) / Smart Indicator, Anion Air Cleaner, Ultrasonic Pest Repellent

ENTRANCE



201 Type



100 Type

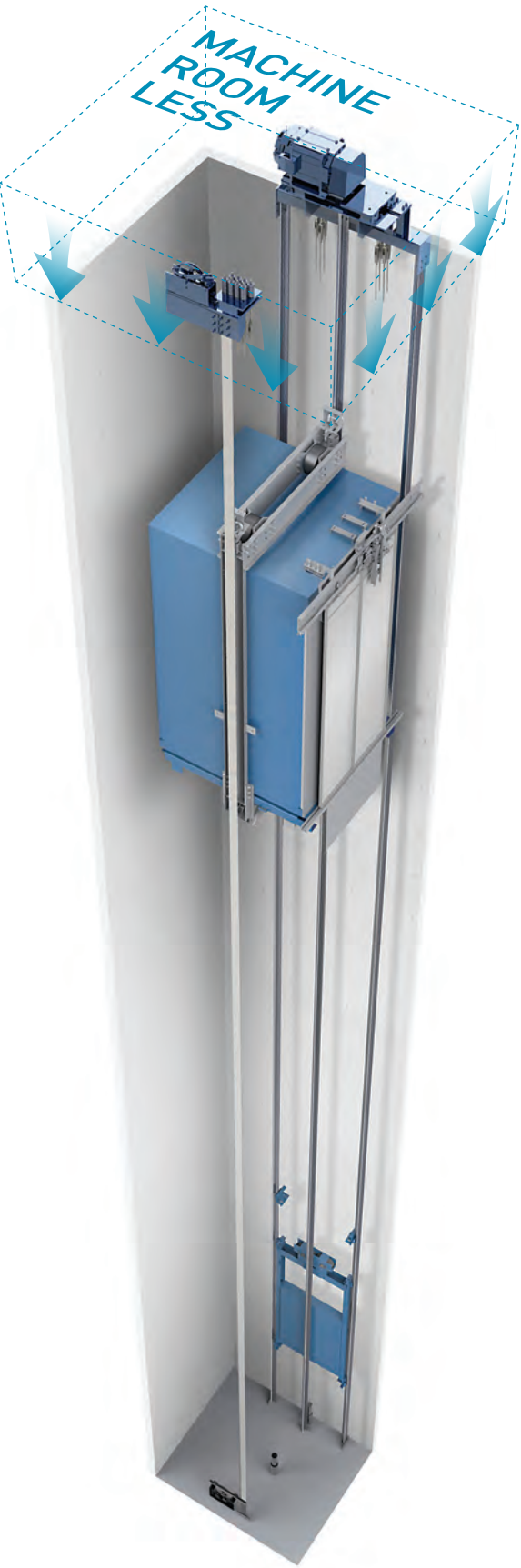


50 Type

- | | | |
|----------|---------------|---------------------------------------|
| 201 Type | Jamb | → Stainless Hairline / 201Type |
| | Transom Panel | → Stainless Hairline |
| | Door | → Stainless Hairline Etching (SE2312) |
| | Hall Button | → HPB-A64 |
| | Indicator | → PI-D700 |
| 100 Type | Jamb | → Stainless Hairline / 100 Type |
| | Door | → Stainless Hairline Etching (SE2312) |
| | Hall Button | → HIP-DA64 |
| 50 Type | Jamb | → Stainless Hairline / 50 Type |
| | Door | → Stainless Hairline Etching (SE2312) |
| | Hall Button | → HIP-DA64 |

Minimal Space, Maximum Value!

In 1999, Hyundai Elevator introduced the YZER, Korea's first MRL (Machine Room Less) elevator. In 2015, the company rewrote MRL history with the introduction of the YZER II. By minimizing hoistway size, the YZER II reduces spatial needs while increasing customer value.

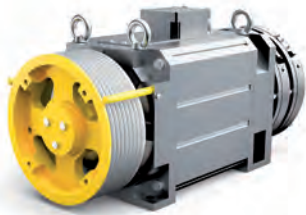


Enhanced Safety through the Application of International Standards

- Guaranteed safe operation by using ropes that meet international standards

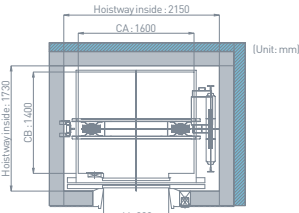
Simple Installation, Fast Delivery

- Application of rail mounting-type traction system
 - Easy to set up because beam sleeve installation at top of the hoistway is not necessary
- 20% shorter installation period
 - Not necessary to build footholds at the top and bottom of the hoistway
 - Simplified process through the use of jigs for exclusive use



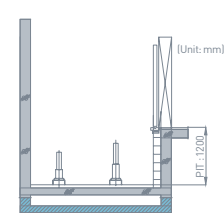
Less burden on construction design and lower construction costs

- Minimum hoistway size



21% reduction in hoistway
(1000kg capacity elevator)

- Minimum pit depth (1200 mm)



300 mm reduction in depth

Easier maintenance and improved customer safety

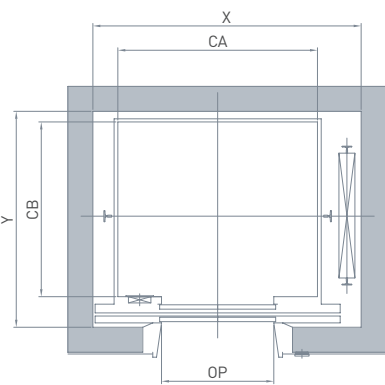
- A high-performance, eco-friendly traction machine with a proven track record
 - Oil-free traction system not requiring regular oiling of the bearing unit
 - Easier to maintain because on-site brake adjustment is not necessary
- Application of DNV, CE, TÜV and CSA-certified for system



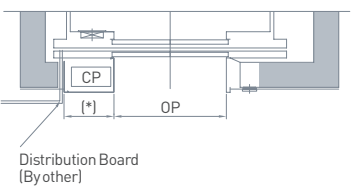
Hoistway Plan and Section

YZER II's hoistway, which exploits minimal space, is the product of extensive R&D by Hyundai Elevator's leading technical experts. Besides contributing to superior performance and riding comfort, it achieves a refined architectural design. The end result is the most efficient use of building space, lower construction costs, and easier maintenance.

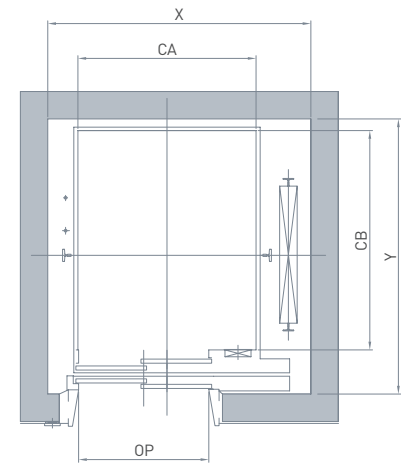
Layout of Hoistway



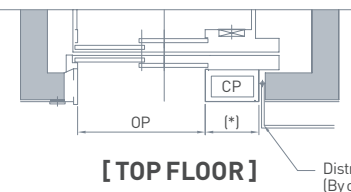
[TYPICAL FLOORS]



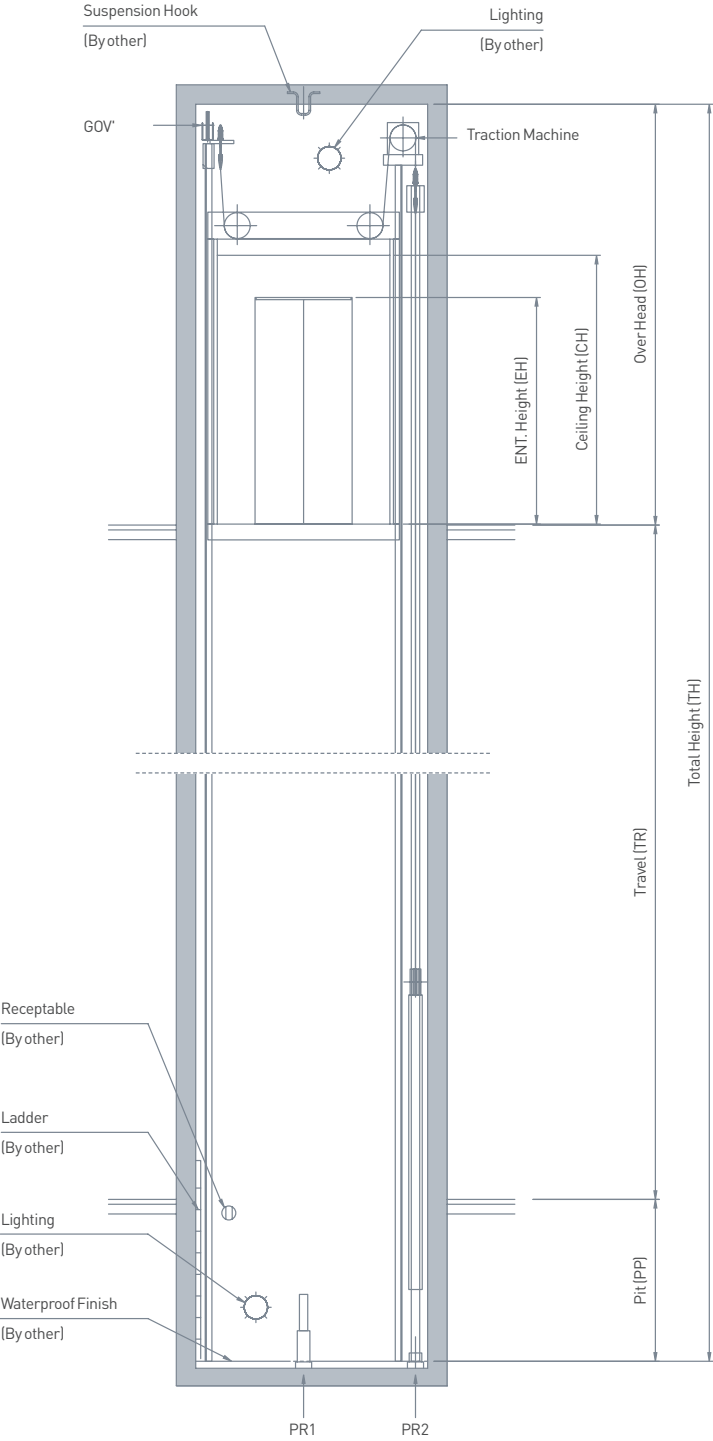
[TOP FLOOR]



[TYPICAL FLOORS]



[TOP FLOOR]



- Notes:
1. The lighting of hoistway should be installed less than 500mm from above the ceiling of hoistway and within 500mm above the bottom of the pit.(By others)
 2. Machine room temperature should be maintained below 40°C with ventilating fan and/or air conditioner(if necessary) and humidity below 90%

Technical Data

Standard Dimensions and Reactions

		Speed (m/sec)	Capacity		Opening Type	Clear Opening	Car Size (mm)	Hoistway Size (mm)	Control Panel Box (mm)	PIT Reaction (Kg)	
			Persons	Kg		OP	CA × CB	X × Y	CP	PR1	PR2
Center	Manufacturer Standard	1.0 1.5 1.75	6	450	2P-CO	700	1100 × 1100	1700 x 1450	505	5600	4700
			7	550		800	1100 × 1300	1800 x 1650		6100	5000
			8	630		800	1100 × 1400	1800 x 1750		7000	5700
						800	1400 × 1100	2000 x 1450		7000	5700
			9	700		800	1250 × 1400	1850 x 1750		7400	6000
			10	800		800	1300 × 1400	1900 x 1750		7800	6200
			12	900		900	1600 × 1300	2200 x 1650		8700	6900
			13	1000		900	1600 × 1400	2200 x 1750		9600	7600
			15	1150		1000	1800 × 1400	2400 x 1750		11000	8700
Side	Manufacturer Standard	1.0 1.5 1.75	5	400	2P-SO	800	1000 x 1100	1550 x 1500	505	5300	4500
			6	450		800	1100 x 1100	1700 x 1550		5600	4700
			7	550		800	1100 x 1300	1700 x 1700		6100	5000
			8	630		800	1100 x 1400	1700 x 1800		7000	5700
			9	700		900	1200 x 1400	1800 x 1800		7400	6000
			10	800		900	1300 x 1400	1900 x 1800		7800	6200
			12	900		900	1300 x 1600	1900 x 2000		8700	6900
			13	1000		900	1100 x 2100	1700 x 2500		9600	7600
						1200	2100 x 1100	2700 x 1550		9600	7600
			15	1150		1000	1200 x 2200	1800 x 2650		11000	8700

1. For dimensions other than standard specifications, please contact us.

2. The above hoistway dimensions represent minimum requirements.

In the event of a discrepancy in construction, demolition and rebuilding shall be performed by other contractors.

3. When the height between elevator hall sills exceeds 11 m, an emergency exit or battery device must be applied to the hoistway.

For inquiries, please consult with us.

4. The double entrance type can be used in certain cases only. For inquiries about hoistway size, please consult with us.

5. In case the emergency stop equipment is applied to the counter weight, please contact us for inquiries.

6. If hoistway has a steel frame structure, components must have a value equal to or greater than the reaction force on rails. Please contact us for inquiries.

7. For duty loads above 1,150 kg, please refer to the specifications of the past model or contact us.

Overhead & Pit Depth

[unit: mm]

Duty Load (kg)	Speed (m/s)	Overhead (OH)	Pit Depth (PP)
400 ~ 1150	1.0	CH+1400	1200
	1.5	CH+1500	1300
	1.75	CH+1600	1400

1. Above dimentions are applied base on standard car size & opening size.

For other applicable dimensions, please contact us.
2. When non-satandard capacities and dimensions are required to meet the local code, Please consult us.

Works to Be Done by Others

The following construction and electrical works are not included in the elevator contract and shall be performed by others.

Building Work

• Hoistway

1. Drilling holes in the walls near the elevator entrance on each floor (for the entrance, hall button, hall lantern, etc.) and wall & floor-finish work after elevator installation (including mortar grouting)

2. Installation of steel reinforcement to fix jambs on the left and right sides of the entrance

3. Installation of ladder for pit inspection

4. Finish work after waterproofing of the inside of pit and mounting of the buffer

5. Supply and installation of hoistway enclosure or separating beam materials (when necessary)

6. Construction of concrete or beam-structured hoistway walls (at least 150 mm thick) where rail brackets can be fixed
7. Removal of wedge pins and molds from, and cleaning of, hoistway walls

8. Provision of space (at no cost) where construction equipment and materials can be stored

9. Destruction of concrete structures which are inconsistent with design plans and necessary finish work

10. Installation of lighting fixtures in the hoistway (minimum 100 lux lights to be installed at top and bottom of the hoistway)

11. Hoisting beam or hook installation to lift machines to the top of hoistway ceiling

12. Miscellaneous (as indicated in drawings)

Electrical Work

• Hoistway

1. Electrical outlet wiring

2. Piping and wiring for electric wires from the monitoring system to the hoistway if such a system is set up

3. Piping and wiring for electric wires if a CCTV is installed

4. Miscellaneous (as indicated in drawings)

5. Power and lighting wiring for the power supply in the hoistway (For installed power capacity, please see drawings for power system construction to be done by other contractors.)

6. Installation of a power distribution box including N.F.B. in the electrical room for elevator use (It shall be installed near the hoistway. For installed power capacity, please see drawings for power system construction to be done by other contractors.)
7. Power system construction that maintains the line voltage fluctuation of a power-distribution source and a light within the range of +5% to -10% and with in ±2% respectively

8. Piping and wiring for outlets used for pit inspection lighting

9. Power supply for construction and test operation during installation (at no cost)

10. Piping and wiring for an emergency call apparatus between the elevator control unit and the central control room/security office (electric wire specifications: per elevator unit; UTP 0.5 mm x 2P)
- * If a steel frame-structured hoistway is set up, please contact us for hoistway planning and other details.

Power Supply Plan

[380V]

Load (kg)	Speed (m/s)	Motor Capacity (kW)	MCCB Capacity of Building (A)		Power Supply Capacity (kVA)		Power Cable Size (mm²)		Earth Wire Size (mm²)		Starting Power (kVA/car)
			1 Car	2 Cars	1 Car	2 Cars	1 Car	2 Cars	1 Car	2 Cars	
400	1.0	2.7	20	40	6	11	4	10	6	10	12
450	1.0	3	20	40	6	11	4	10	6	10	12
550	1.0	3.5	20	40	7	13	4	10	6	10	14
630	1.0	4	20	40	9	18	4	10	6	10	18
	1.5	5.8	32	75	15	30	6	16	6	10	30
	1.75	6.8	32	75	15	30	6	16	6	10	30
700	1.0	5	20	40	9	18	4	10	6	10	18
	1.5	8	32	75	15	30	6	16	6	10	30
	1.75	9	32	75	15	30	6	16	6	10	30
800	1.0	5	20	40	9	18	4	10	6	10	18
	1.5	8	32	75	15	30	6	16	6	10	30
	1.75	9	32	75	15	30	6	16	6	10	30
900	1.0	5.4	20	40	12	23	4	10	6	10	24
	1.5	8.1	32	75	21	41	10	25	6	10	42
	1.75	9.5	32	75	21	41	10	25	6	10	42
1000	1.0	6	20	40	12	23	4	10	6	10	24
	1.5	9	32	75	21	41	10	25	6	10	42
	1.75	10.5	32	75	21	41	10	25	6	10	42
1150	1.0	7.2	32	75	14	27	4	10	6	10	28
	1.5	10.4	40	75	24	47	10	25	6	16	48
	1.75	12.1	40	75	24	47	10	25	6	16	48

* Power cable size is assuming max. 50 m to maintain the maximum allowable voltage drop of 5% based on the maximum starting current at operating with full load



GLOBAL SALES & SERVICE NETWORK

AFRICA

ALGERIA
Tel : 213-555-732-155
E-mail : xeletec.sarl@gmail.com

EGYPT
Tel : 20-1-066628331
E-mail : overseas@iet-hyundaelevator.com

ETHIOPIA
Tel : 251-911-851313
E-mail : ieethiopia1@gmail.com

KENYA
Tel : 254-722-667984
E-mail : lyall@skytechelevators.com

LIBYA
Tel : 218-91-735-0745
E-mail : info@lec-hyundaelevator.com

NIGERIA
Tel : 234-803-7352222
E-mail : nicolas@orionelevators.com

TUNISIA
Tel : 216-71-886-980
E-mail : idealcommercial@gnet.tn

ASIA

CAMBODIA
Tel : 855-90-216-490
E-mail : khleea7@gmail.com

CHINA
[Head Office (Factory)]
Tel : 86-21-6485-8600
E-mail : 2017407@hdel.co.kr

HONG KONG
Tel : 86-755-2585-5903
E-mail : hyundaisz@naver.com

INDIA
Tel : 91-20-3250-2190
E-mail : mmotwani@kcl.kineticindia.com
helco2019906@hdel.co.kr

INDONESIA
Tel : 62-21-631-8444
E-mail : helindo@dnnet.net.id

JAPAN
Tel : 81-3-3436-5117
E-mail : yoshimi-saitoh@daiko-s.co.jp

MALAYSIA
Tel : 603-6733-2999
E-mail : brian.lee@hem.com.my

MONGOLIA
Tel : 976-11-7015-3333
E-mail : ch-highig@yahoo.com

MYANMAR
Tel : 959-400-444598
E-mail : info@integral-ltd.com

PHILIPPINES
Tel : 632-716-0905
E-mail : hyco@pltdsl.net

SRILANKA
Tel : 94-11-2629208
E-mail : rienzie@abansgroup.com

THAILAND
Tel : 660-2348-8046
E-mail : monchaika@loxely.co.th

VIETNAM
Tel : 84-4-6282-2978
E-mail : sbpark@hdel.co.kr

EUROPE & CIS

ARMENIA
Tel : 971-4-440-49-27
E-mail : natalya@fd-jcb.am

AZERBAIJAN
Tel : 994-12-555-1744-46
E-mail : office@astexnika.com

KAZAKHSTAN
Tel : 7-717-253-8072
E-mail : dmitriy@hdel.kz

KYRGYZSTAN
Tel : 996-312-474205
E-mail : a918882@hotmail.com

MAKEDONIA
Tel : 90-216-488-8000
E-mail : hakan.ek@hmf.com.tr

POLAND
Tel : 48-61-820-8551
E-mail : maciej.dziurkiewicz@omilifts.com

RUSSIA
[Moscow]
Tel : 7-495-514-00-32
E-mail : mastersiverlift@gmail.com

[Vladivostok]
Tel : 7-423-222-98-73
E-mail : Kirienkoboris@hotmail.com

TURKEY
Tel : 90-216-488-8000
E-mail : hakan.ek@hmf.com.tr

MIDDLE EAST

BAHRAIN
Tel : 973-17702468
E-mail : elevators@nassgroup.com

IRAN
Tel : 98-21-8869-8727-36
E-mail : jafari_hyundai@yahoo.com

IRAQ
Tel : 964-7901336498
E-mail : arjoon_co@yahoo.com

ISRAEL
Tel : 972-3-9630000
E-mail : eltib@ledico.com

JORDAN
Tel : 962-79-5526-713
E-mail : m_bseiso@orange.jo

KUWAIT
Tel : 965-22-457-925
E-mail : info@deal-trade.com

OMAN
Tel : 968-9286-4334
E-mail : helcomct@gmail.com

PAKISTAN
Tel : 92-21-34320601~5
E-mail : iitcpk@gmail.com

QATAR
Tel : 974-436-6689
E-mail : hmhqatar@yahoo.com

SAUDI ARABIA
Tel : 966-12-6683555
E-mail : waqqas@nsc-ksa.com

SYRIA
Tel : 963-933-234134
E-mail : terzian@scs-net.org

UAE
Tel : 971-4-294-4475
E-mail : dubai@bhnoe-hyundai.com

YEMEN
Tel : 967-1-450556
E-mail : waha62@hotmail.com

NORTH/SOUTH AMERICA

ARGENTINA
Tel : 5411-3220-2878
E-mail : ogueta@skylift.com.ar

BRAZIL
[Head office (Factory)]
Tel : 55-51-3037-8686
E-mail : syyun@hdel.co.kr

[Sao Paulo (Sales office)]
Tel : 55-11-5102-3380
E-mail : mrshin@hdel.co.kr

CHILE
Tel : 56-2-2635-3394
E-mail : lcld@cyce.cl

COLOMBIA
Tel : 57-4-444-9297
E-mail : sgiraldo@solucionesverticales.com.co

CUBA
Tel : 537-699-3412
E-mail : habanajdkim@gmail.com

HEAD OFFICE & FACTORY

2091, Gyeongchungdero, Bubal-eup,
Icheon-si, Gyeonggi-do, 467-734, Korea
tel 82. 2. 3670. 0876 / 0660
fax 82. 2. 3672. 8763~4

SEOUL OFFICE (GLOBAL SALES DIV.)

9F, East Bldg., Hyundai Group Bldg., 194,
Youlgok-ro, jongno-gu, Seoul, 110-754, Korea
tel 82. 2. 3670. 0876 / 0660
fax 82. 2. 3672. 8763~4